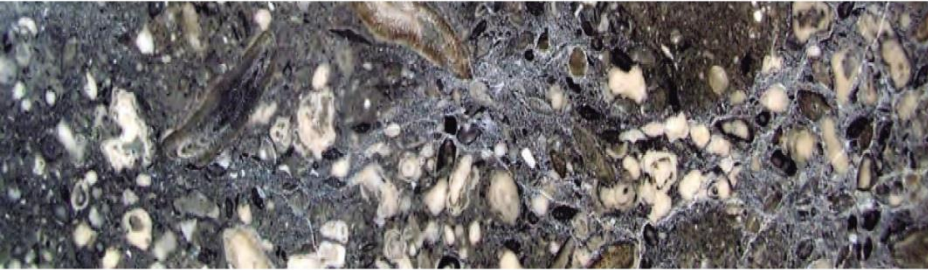


## SHORT COURSES:

Sedimentology and sequence stratigraphic response of carbonates to change in accommodation: predicting reservoir architecture.  
Duration 2-4 days. Leaders: R. Salas and T. Bover-Arnal.



## OTHER SERVICES:

Petrological and geochemical studies of carbonates and evaporites, ornamental and building rocks.

Biostratigraphic attribution of non-marine Cretaceous and Palaeogene rocks, based on charophytes.



### CONTACT:

atrave@ub.edu  
Tel. +34 934021416  
Dep. Geoquímica, Petrologia i Prospecció Geològica  
Facultat de Geologia.  
Universitat de Barcelona  
Carrer Martí i Franqués, s/n  
08028 Barcelona

# SEDIMENTARY GEOLOGY RESEARCH GROUP



## RESEARCH LINES:

BASIN EVOLUTION AND SEDIMENTARY MODELS  
CARBONATES AND GEOFLUIDS  
CONTINENTAL PALEOBIOLOGY  
EVAPORITES  
MARINE PALEOBIOLOGY  
PETROLEUM GEOCHEMISTRY



## FIELD SEMINARS:

Fractured carbonate reservoir analogs. Normal faulting and their related deformation and diagenetic processes: karstification, dolomitization and brecciation.  
Leaders: V. Baqués and A. Travé

The Aptian carbonate platforms of the Maestrat Basin: sequence stratigraphy, geometries, architecture, facies heterogeneities and relative sea-level drops.  
Leaders: T. Bover-Arnal and R. Salas

Tertiary-Mesozoic unconformity, paleokarst and fluid circulation in the Penedès basin. Leaders: V. Baqués and A. Travé

Middle Triassic microbial carbonates and its reservoir potential in the Catalan Basin. Leaders: R. Mercedes-Martín and R. Salas

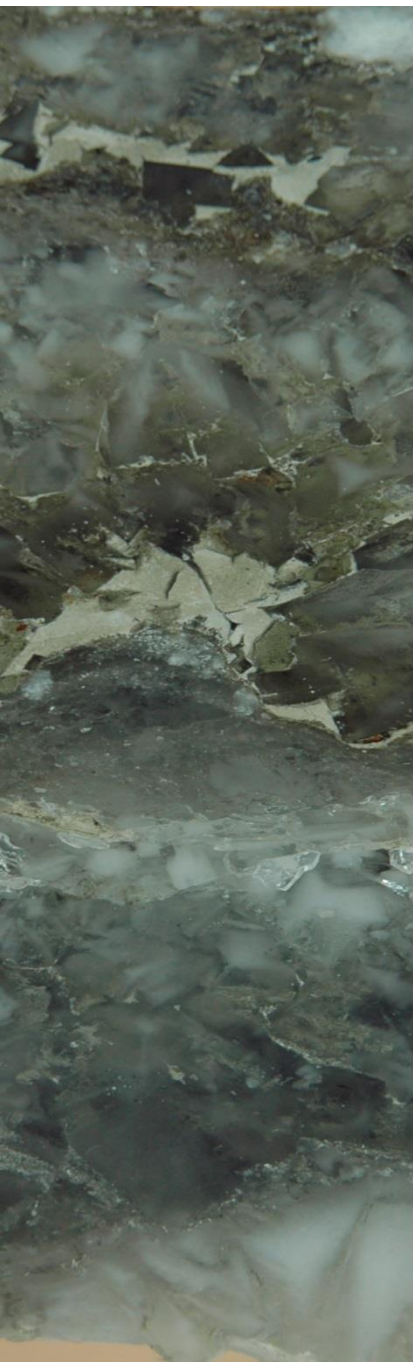
Paleobotanical of the Carboniferous-Permian, Upper Cretaceous and Neogene of Catalonia. Leader: C. Martín Closas

Biostratigraphy of Cretaceous and Palaeogene charophytes. Leader: C. Martín Closas

Fault-related dolomites in Benicassim-Orpesa area. Understanding the dolomitization process and implications for the reservoir properties of the rocks and fault zones. Leader: J.D. Martín Martín

Eocene Petroleum System in the Southeastern Pyrenees. Leader: Albert Permanyer





#### Senior researchers

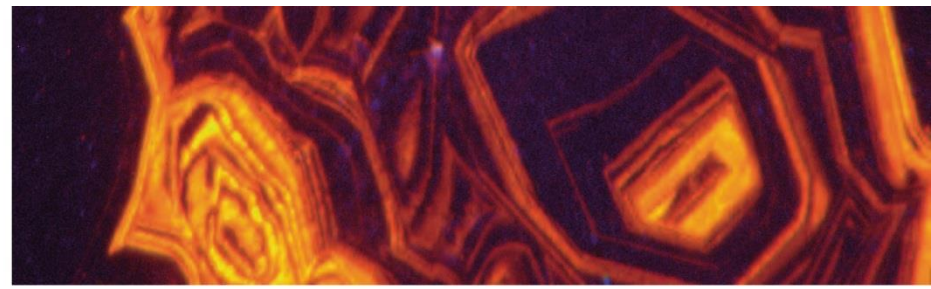
Delclòs Martínez, Xavier  
Ferràndez Cañadell, Carles  
García Veigas, Xavier  
Gibert Beotas, Lluís  
Martín Closas, Carles  
Martín Martín, Juan Diego  
Ortí Cabo, Federico  
Parcerisa Duocastella, David  
Permanyer, Albert  
Playà Pous, Elisabet  
Rosell Ortiz, Laura  
Salas Roig, Ramon  
Travé Herrero, Anna (Coordinator)

#### Postdoctoral researchers

Baqués Almirall, Vinyet  
Bover Arnal, Telm  
Cantarero Abad, Irene  
Villalonga Monte, Raquel

#### PhD students

Albert Villanueva, Eduard  
Gallardo Garcia, Alejandro  
Moragas Rodríguez, Mar  
Peris Cerdán, David  
Sánchez Garcia, Alba  
Vicente Rodríguez, Alba



#### Recent Research linked to companies

Depositional models of the Upper Oligocene - Lower Miocene carbonate ramps from the Falcón Basin (Venezuela) as outcrop analogs for oil reservoir modeling. Repsol Exploración, S.A.

Diagenetic study of cements from Dulaan Uul (Mongolie). Areva NC.

Evaluation of Shale Gas & Oil Potential in the Palaeo-Proterozoic McArthur Basin, Northern Territory, Australia. Imperial Oil & Gas Project Pty Ltd.

Fault-related dolomites in Benicassim-Orpesa area. Understanding the dolomitization process and implications for the reservoir properties of the rocks and fault zones. ExxonMobil Global Services Company.

Integrated Structural and Geodynamic research studies: High Atlas Diapiric Ridges and Platform Margins. Statoil.

Microbial carbonates analogs for hydrocarbon reservoir characterization. Repsol Exploración, S.A.

Origin and distribution of cements in the platform facies of Shuaiba formation. Maersk Oil Qatar.

Oligocene-Miocene red-algal limestones of the Prebetic domain (SE Spain) Repsol Exploración, S.A.

Petrological and geochemical characterization of the Navarra potash basin. Geoalcali S.L.

The Annot sandstones. Relationships between diagenesis and compressional tectonics. TOTAL.

The Pre-Messinian anoxic sedimentation in southeastern Iberia. Repsol Exploración, S.A.

