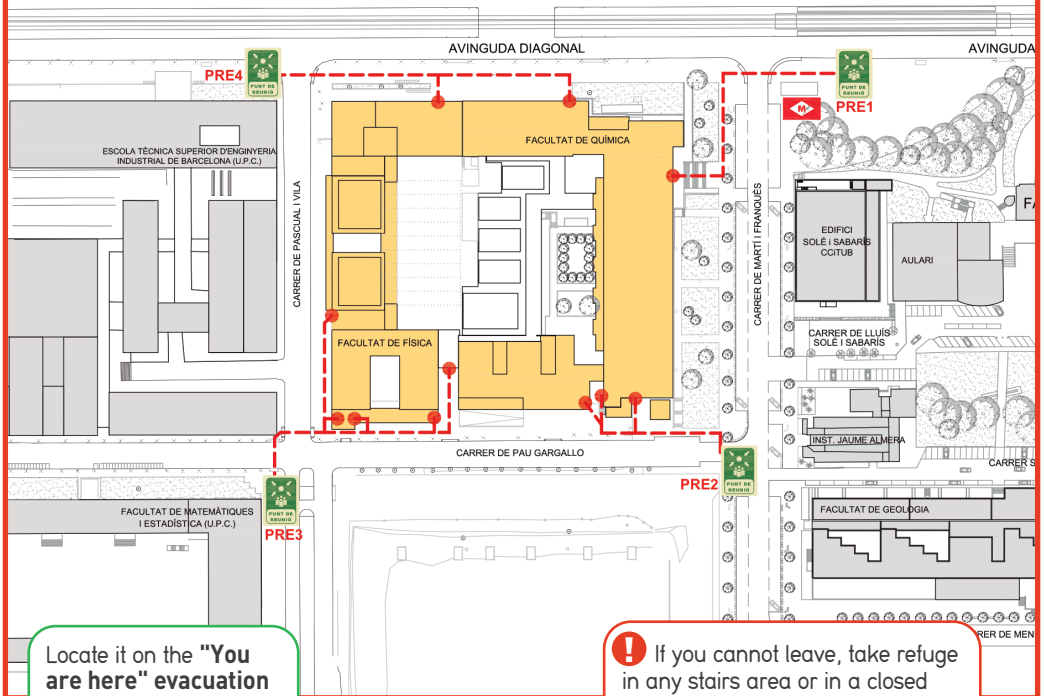


IN CASE OF EMERGENCY

FACULTY OF PHYSICS
FACULTY OF CHEMISTRY

Where is your nearest emergency exit?



Locate it on the "You are here" evacuation maps you will find in the stairs and lifts area.

⚠ If you cannot leave, take refuge in any stairs area or in a closed space as far away as possible from the emergency and ask for help.

IN CASE OF EMERGENCY CONTACT
THE INFORMATION POINT
9340 39090


ossma@ub.edu

 UNIVERSITAT DE
BARCELONA

Oficina de Seguretat,
Salut i Medi ambient

IN WHICH CASES SHOULD YOU LEAVE THE BUILDING?



In case of other emergencies, such as toxic snow or clouds, follow the instructions of the emergency services.

If the alarm goes off, exit immediately



If fire surrounds you, protect yourself



If you detect fire, give a warning



Warn the centre's Information Point.

Close windows and do not leave doors open behind you.

When and how to use a fire extinguisher

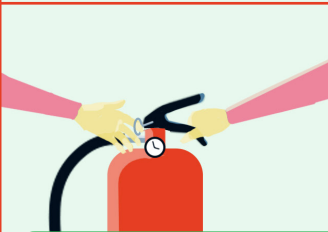
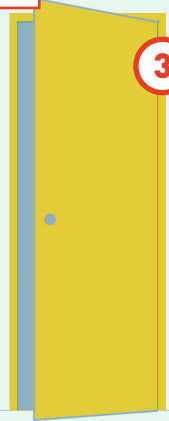
1



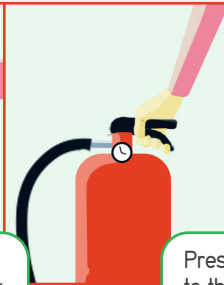
3

Use the extinguisher only if:

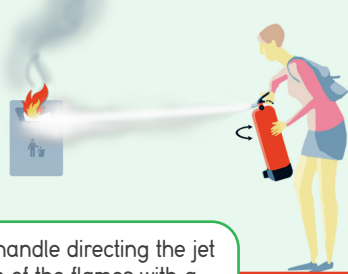
1. There is little smoke.
2. The fire is small.
3. There is an open exit.



Take the extinguisher by the handle and remove the seal by pulling the ring.



Press the handle directing the jet to the base of the flames with a zigzag movement.



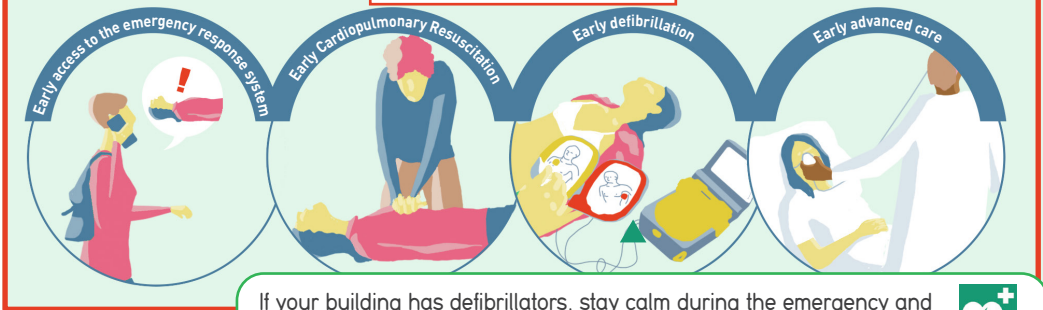
HEALTH EMERGENCIES

If the person requiring assistance is unconscious, first call **112** and inform the Information Point as soon as possible.

Locate the nearest emergency equipment to be able to use it in case of burning, contact with corrosive or toxic products, etc.



Chain of survival

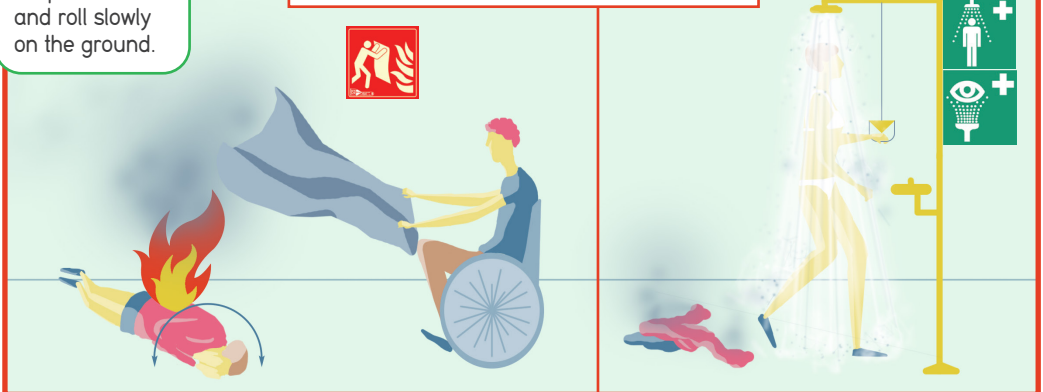


If your building has defibrillators, stay calm during the emergency and follow the instructions for use: there is no risk for you.



Drop to the floor and roll slowly on the ground.

If your clothing catches fire



- 1) Always follow the instructions that you receive from the UB interlocutor or the person in charge.
- 2) Do not move around UB facilities if you are not authorized. Access to decks, centres of transformation of electrical energy, machine rooms and similar technical facilities, and confined spaces or enclosures is prohibited.
- 3) Do not use any facility nor manipulate any UB equipment or product or waste containers without authorization.
- 4) Keep the facilities clean and tidy during and after work. Disorder creates confusion and mistakes, and causes accidents.
- 5) Put physical barriers to tasks that entail a risk for third parties.