

INTERNATIONAL RESEARCH FOR YOUNG RESEARCHERS: context, opportunities and the role of the OPIR



January 31, 2018

**Oficina de Projectes Internacionals de Recerca (OPIR)
Universitat de Barcelona – Fundació Bosch i Gimpera**

Parc Científic, Torre D, 4a planta
Baldri Reixac, 4-8
08028 Barcelona
Tel. +34 934 035 383
recerca.europea@ub.edu
www.ub.edu/oper

ÍNDEX

1. CONTEXT

1.1. HORIZON 2020: STRUCTURE

1.2. PROJECTS

1.3. WORK PROGRAMMES

2. OPPORTUNITIES

2.1. RESEARCH CAREER

2.2. MARIE SKŁODOWSKA-CURIE ACTIONS

2.3. EUROPEAN RESEARCH COUNCIL (ERC)

3. THE ROLE OF THE OPIR

3.1. GENERAL FRAME

3.2. RESEARCH PROMOTION AND ENVIRONMENT

3.3. SUBMITTING A PROPOSAL: SIMPLIFIED PROCEDURE

1.1. HORIZON 2020: STRUCTURE

HORIZON 2020 is the EC financial instrument for the period 2014-2020. It links **research** and **innovation** by integrating all the research phases (from the generation of knowledge to close-to-market activities).

PILLAR 1

EXCELLENT SCIENCE

Reinforce and extend scientific excellence and consolidate the European Research Area to increase competitiveness worldwide.

- European Research Council (ERC)
- Future and Emerging Technologies (FET)
- Marie Skłodowska-Curie actions (MSCA)
- Research Infrastructures (RI)

PILLAR 2

INDUSTRIAL LEADERSHIP

Develop technologies and innovations that support companies and SMEs to become leading companies in the world.

- Leadership in Enabling and Industrial Technologies (LEIT)
 - KETs (Nanotech., Adv. materials, Adv. manufact. and processing, Biotech.)
 - ICT
 - Space
- Access to risk finance
- Innovation in SMEs

PILLAR 3

SOCIETAL CHALLENGES

Address and investigate the main concerns shared by citizens of Europe and other places (priorities of the Europe 2020 Strategy policy).

- SC1: Health, Demographic Change and Wellbeing
- SC2: Food Security, Sustainable Agriculture and Forestry, Marine, Maritime and Inland Water Research and the Bioeconomy
- SC3: Secure, Clean and Efficient Energy
- SC4: Smart, Green and Integrated Transport
- SC5: Climate Action, Environment, Resource Efficiency and Raw Materials
- SC6: Europe in a changing world - Inclusive, innovative and reflective societies
- SC7: Secure societies – Protecting freedom and security of Europe and its citizens

Science with and for Society (SWAFS): cooperation between science and society, with conscience and social responsibility.

Spreading Excellence and Widening Participation (SEWP): optimize the strengths of MS to rationalize and standardize.

1.2. PROJECTS

TIPOLOGIES

According to the topics:

- **OPEN** (*botom-up*): basically Pillar 1. Any research line is financed.
- **CLOSED** (*top-down*): in general, Pillars 2 and 3. Research is financed in pre-established lines.

According to the participants:

- **INDIVIDUAL**: basically ERC and MSCA Individuals.
- **COLLABORATIVE**: the rest. Participation may be as *Coordinator* or *Partner*.

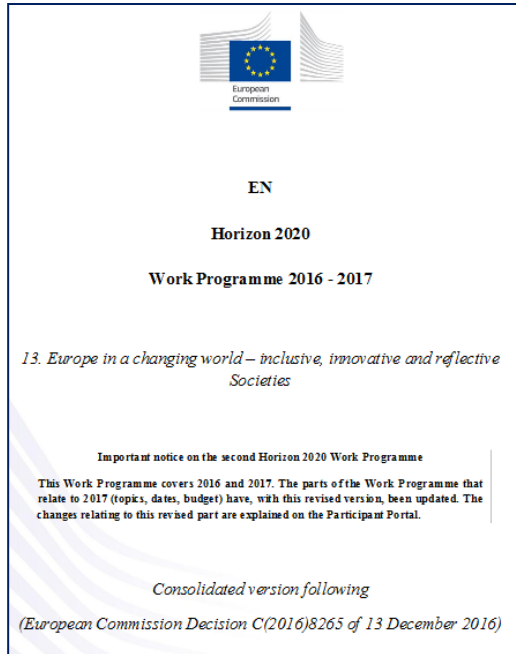
ACTIONS (COLLABORATIVE PROJECTS)

- **Research and Innovations Actions (RIA)**: Projects that address clearly defined challenges, which can lead to the development of new knowledge or new technology.
- **Innovation Actions (IA)**: Projects with close-to-market activities, such as the creation of prototypes, essays, demonstration, etc., if they aim to produce new or improved products or services.
- **Coordination and Support Actions (CSA)**: Coordination of networks of projects, programs and policies of research and innovation (may include complementary activities of strategic planning, networking and coordination between programs in different countries).

SOME FEATURES OF COLLABORATIVE PROJECTS

- They imply new features and/or advances in knowledge, technologies, processes, etc., and depending on the call, they can cover from basic research to innovation.
- Projects must have a European and/or international dimension and use to be transnational.
- Collaborative projects require the participation of a minimum of 3 entities from 3 different Member States (open to the participation of third countries).
- Projects are multi-sectoral and multidisciplinary.
- Impact is a key aspect, especially with regard to economic and social aspects.
- They are compatible with any other grants, as long as the regulations allow it.

1.3. WORK PROGRAMMES



Work Programmes are biennial documents that specify the lines of research that will be financed through HORIZON 2020.

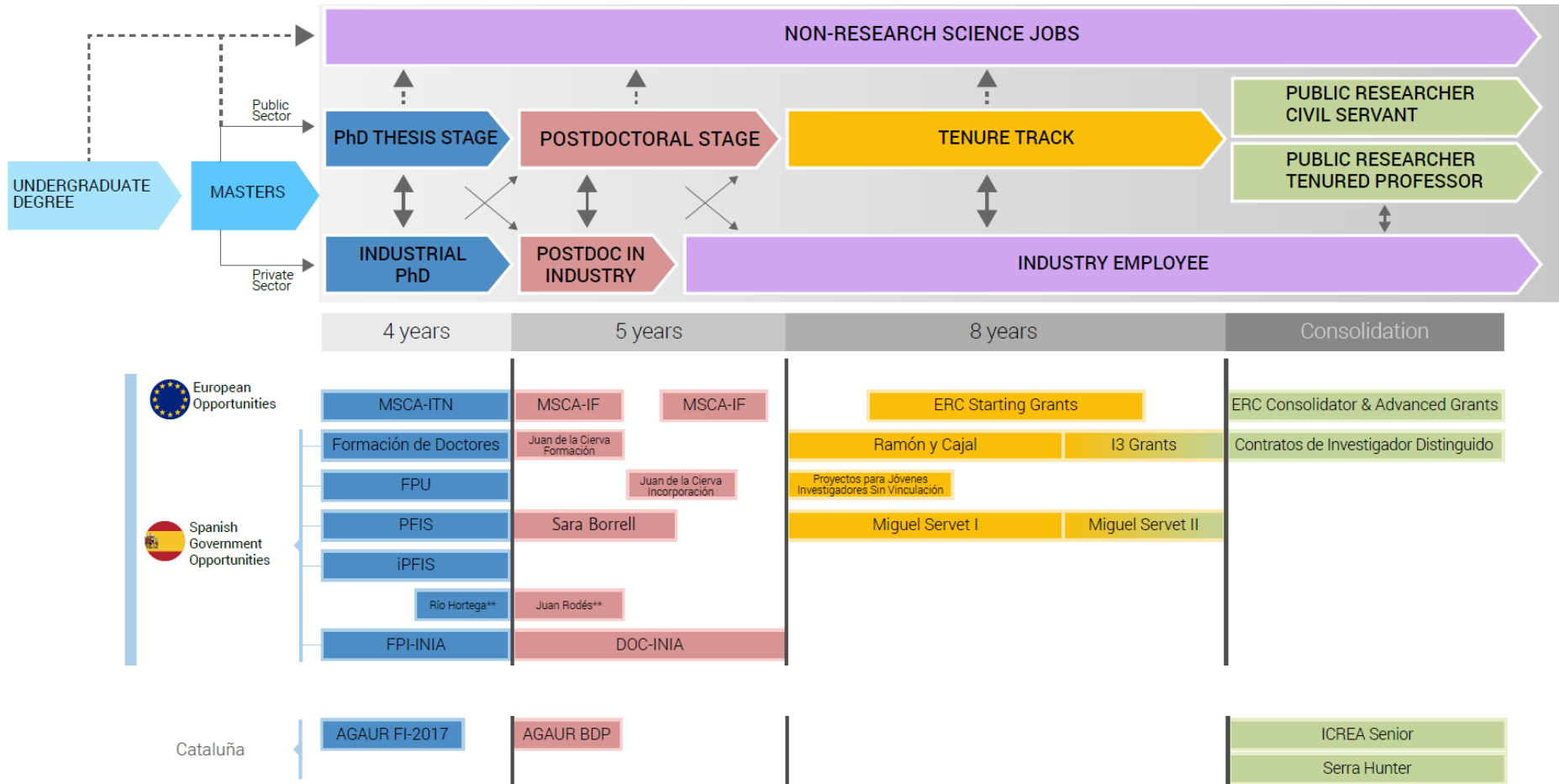
Each line of research is developed in a series of **topics**, each of which is described with all the necessary specifications so that researchers know the scope of the research and their possibilities to opt for financing.

Call - UNDERSTANDING EUROPE - PROMOTING THE EUROPEAN PUBLIC AND CULTURAL SPACE	84
CULT-COOP-01-2017: Democratic discourses and the rule of law	84
CULT-COOP-02-2017: Improving mutual understanding among Europeans by working through troubled pasts	86
CULT-COOP-03-2017: Cultural literacy of young generations in Europe	89
CULT-COOP-04-2017: Contemporary histories of Europe in artistic and creative practices	90
CULT-COOP-05-2017: Religious diversity in Europe - past, present and future	91
CULT-COOP-06-2017: Participatory approaches and social innovation in culture	92
CULT-COOP-07-2017: Cultural heritage of European coastal and maritime regions	94
CULT-COOP-08-2016: Virtual museums and social platform on European digital heritage, memory, identity and cultural interaction	96
CULT-COOP-09-2017: European cultural heritage, access and analysis for a richer interpretation of the past	98
CULT-COOP-10-2017: Culture, integration and European public space	100
CULT-COOP-11-2016-2017: Understanding the transformation of European public administrations	102
CULT-COOP-12-2017: The significance of cultural and core values for the migration challenge	106

Work Programmes can be found in the **EC Participant Portal**, which is the reference portal for all questions related to **HORIZON 2020**:

http://ec.europa.eu/research/participants/portal/desktop/en/funding/reference_docs.html#h2020-work-programmes

2.1. RESEARCH CAREER



2.2. MARIE SKŁODOWSKA-CURIE ACTIONS

Individual MSCA Actions are Individual Fellowships for experienced researchers looking to enhance their career development and prospects through mobility.

Evaluation criteria: **EXCELLENCE** (50%), **IMPACT** (30%) and **IMPLEMENTATION** (20%).

EUROPEAN FELLOWSHIPS

- Held in EU Member State or Associated Country.
- Open to researchers coming or moving within Europe.
- Funding for 2 years.

GLOBAL FELLOWSHIPS

- Fund secondments outside Europe.
- Funding for 2-3 years.
- There is a mandatory 1-year return period.

SOME TIPS

A merry host makes merry guests: demonstrate the good quality of the host. Remember: be sure that supervisor understands his/her role and agrees to host/support you.

Take your time: read carefully all guidelines and evaluation criteria when writing the proposal.

Successful proposals are SMART: Specific, Measurable, Achievable, Relevant and Timely.

Link the project to a bigger picture: your career. MSCA IF targets researchers with a proven track record of high achievement relative to their career stage.

Strengths may not outweigh weaknesses: all sections are important! Follow the evaluation criteria.

Reach Out!: outreach, communicate and disseminate

Patience, perseverance and positivity!

Goal: to enhance the creative and innovative potential of researchers wishing to diversify their competence in terms of skill acquisition through advanced training, international and intersectorial mobility.

Applications: any field of research .

Who can apply: experienced researchers from anywhere (doctoral degree or at least 4 years' full-time research experience by the time of the call deadline).

Support promising researchers at any stage of their career.

No restrictions on resubmission of proposals.

2.3. EUROPEAN RESEARCH COUNCIL (ERC)

ERC Starting and Consolidator Grants are grants to support excellent researchers who are starting or consolidating their own independent research team or programme.

Evaluation criteria: **EXCELLENCE** (on the project and on the researcher trajectory).

STARTING GRANTS

- Grants up to 1,5 million € for 5 years.
- For promising early-career researchers with 2 to 7 years experience after PhD.

CONSOLIDATOR GRANTS

- Grants up to 2 million € for 5 years.
- For excellent researchers with 7 to 12 years experience after PhD.

SOME TIPS

Before applying: adapt your publication plan to the criteria of the ERC.

Frontier research: not basic, applied or technological.

Take your time: a good idea needs a year of preparation to become a proposal. It is recommended to discuss the proposal with evaluators and grantees.

Analyse carefully guidelines and templates of the call and check projects granted by the ERC in your research line.

All sections of the proposal are important, but the abstract is decisive. CV and Track Record section are only 4 pages but half of the evaluation, so think carefully what to include.

The writing of the proposal is key: work accurately references, which show whether research it is novel and ground-breaking. Adapt the approach and methodology to the expertise of the evaluation panel selected.

Goal: innovative proposals with emphasis on the quality of the idea rather than the research area.

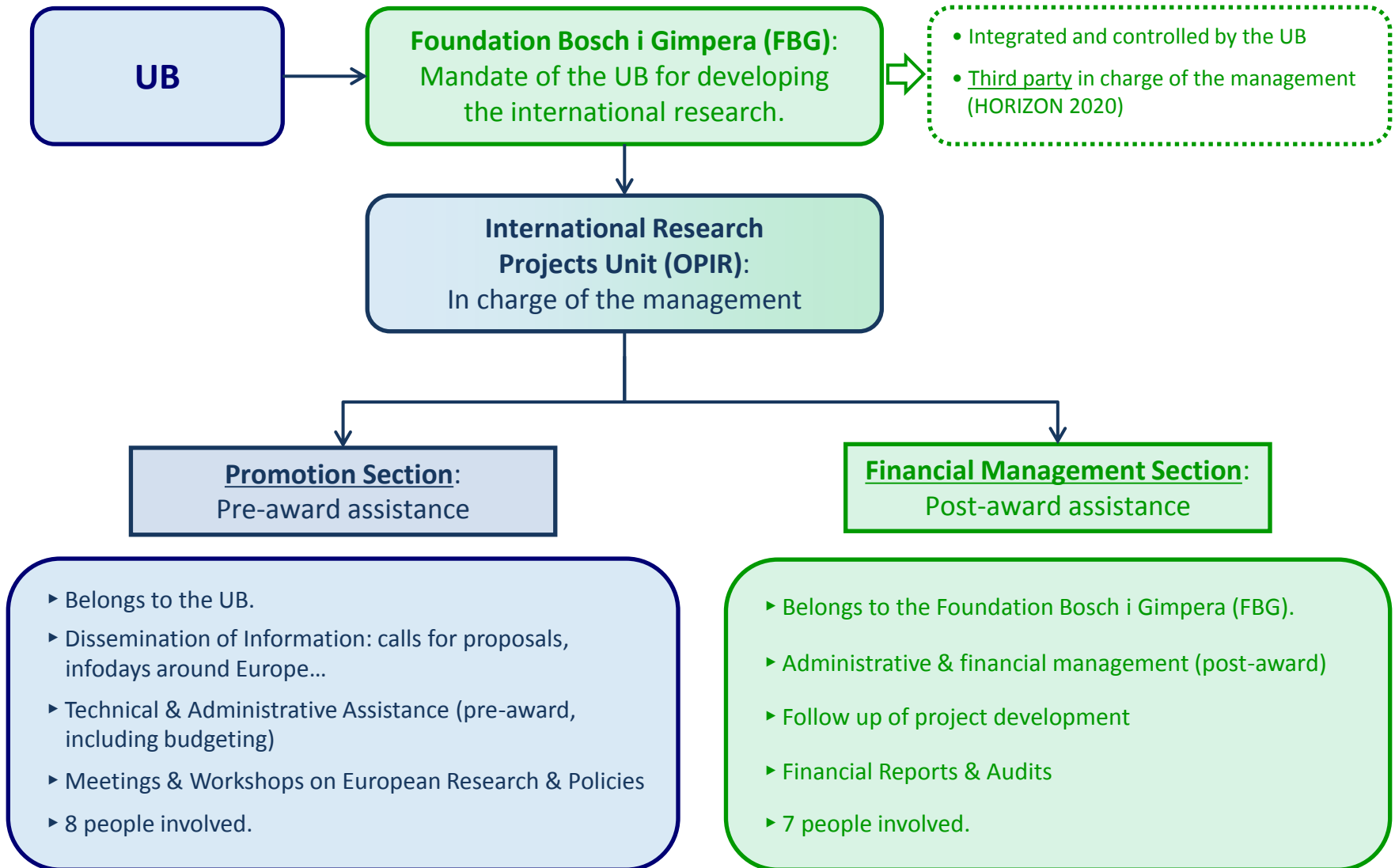
Applications: any field of research (investigator-driven, bottom-up frontier research).

Who can apply: researchers from anywhere.

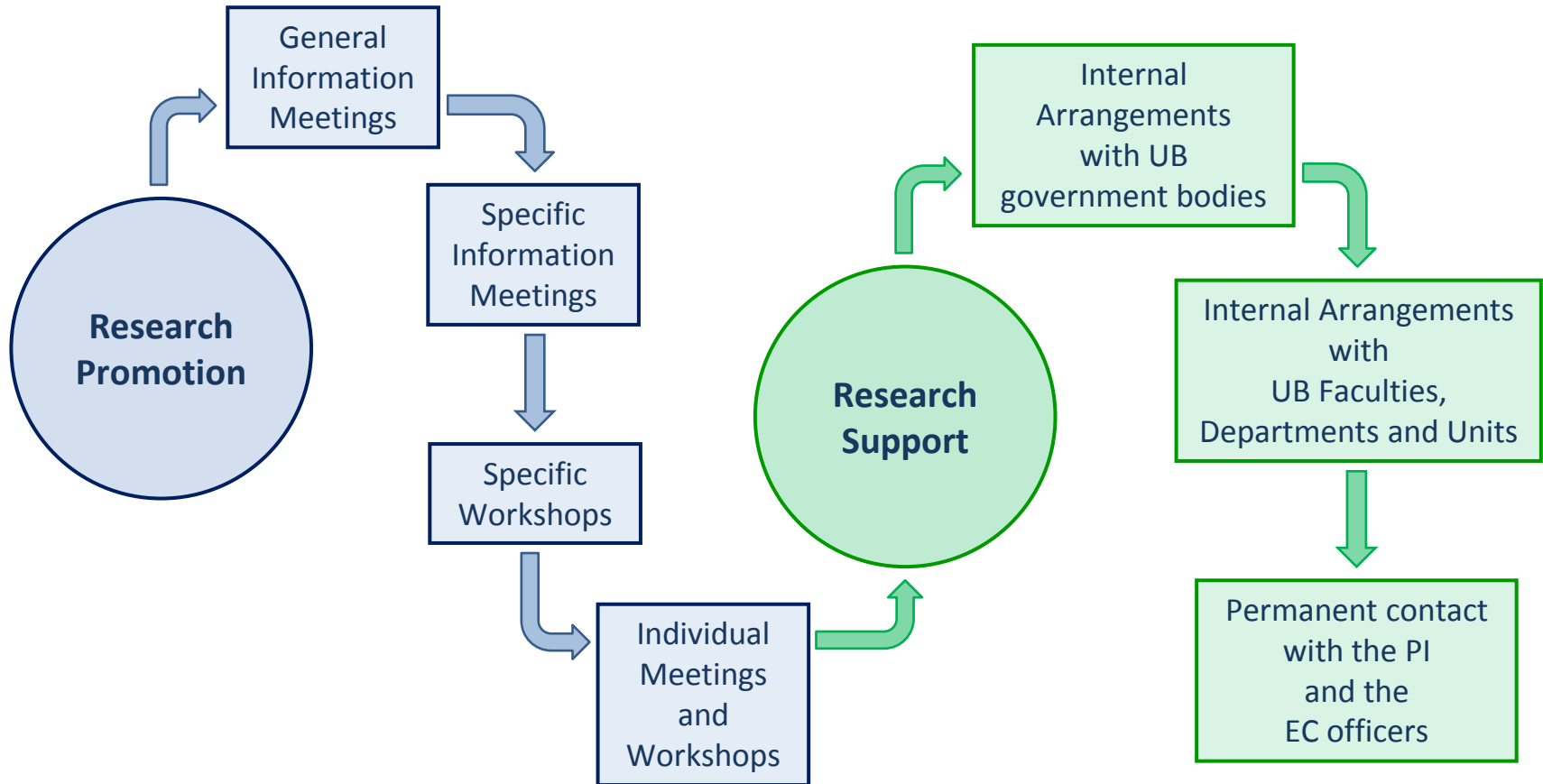
Support excellent researchers with the aim of empowering them and providing them with the best settings to foster their creativity.

Restrictions on resubmission of proposals .

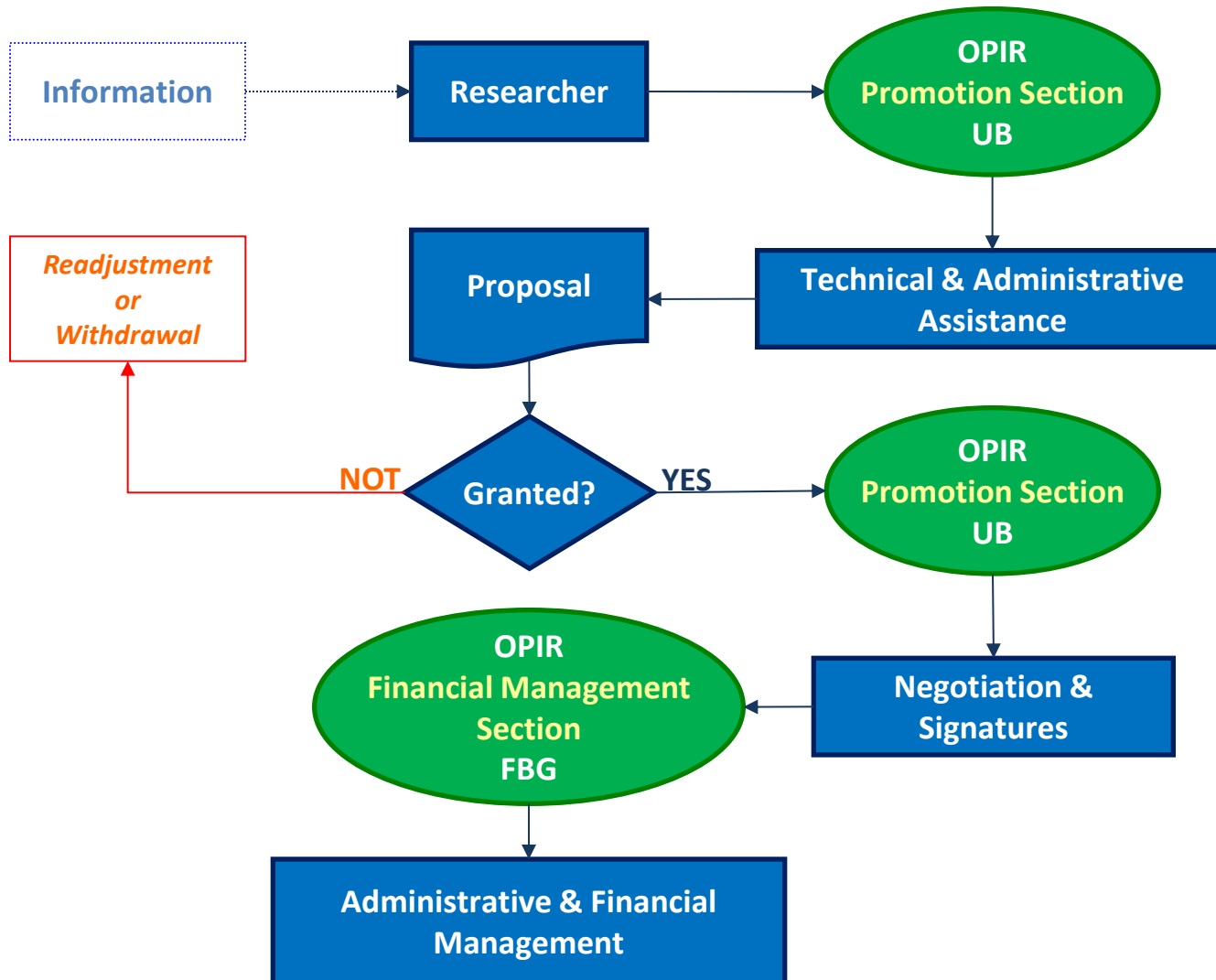
3.1. GENERAL FRAME



3.2. RESEARCH PROMOTION AND ENVIRONMENT



3.3. SUBMITTING A PROPOSAL: SIMPLIFIED PROCEDURE



SOME LINKS

EC Participant Portal

<http://ec.europa.eu/research/participants/portal/desktop/en/home.html>

Marie Skłodowska-Curie Actions:

<http://ec.europa.eu/research/mariecurieactions>

EURAXESS Jobs (job opportunities):

<http://ec.europa.eu/euraxess/index.cfm/jobs>

European Research Council:

<https://erc.europa.eu>



OPIR web:

<http://www.ub.edu/oper>

Mail:

recerca.europea@ub.edu